



MOVING FORWARD

2 0 1 2 A N N U A L R E P O R T

INSIDE: A Decade of Ethanol | Legislation Defended and Defeated | Membership Matters

TABLE OF CONTENTS

CONTACT INFO

CHAIRMAN'S LETTER3
ETHANOL FACT SHEET4-5
PRESIDENT'S LETTER6
CAPITOL HILL7
STATE LEGISLATURE8-9
SHARING OUR STORY 10-13
BEST MANAGEMENT PRACTICES.....14
RESEARCHING OPPORTUNITIES15
MEMBERSHIP MATTERS16
FINANCIALS17
ETHANOL: FUELING WITH PRIDE..... 18-19

3118 Emerald Lane
Jefferson City, MO 65109
Phone: (573) 893-4181
Toll-free: (800) 827-4181
Fax: (573) 893-4612
E-mail: mcga@mocorn.org
Web: www.mocorn.org

SOCIAL MEDIA

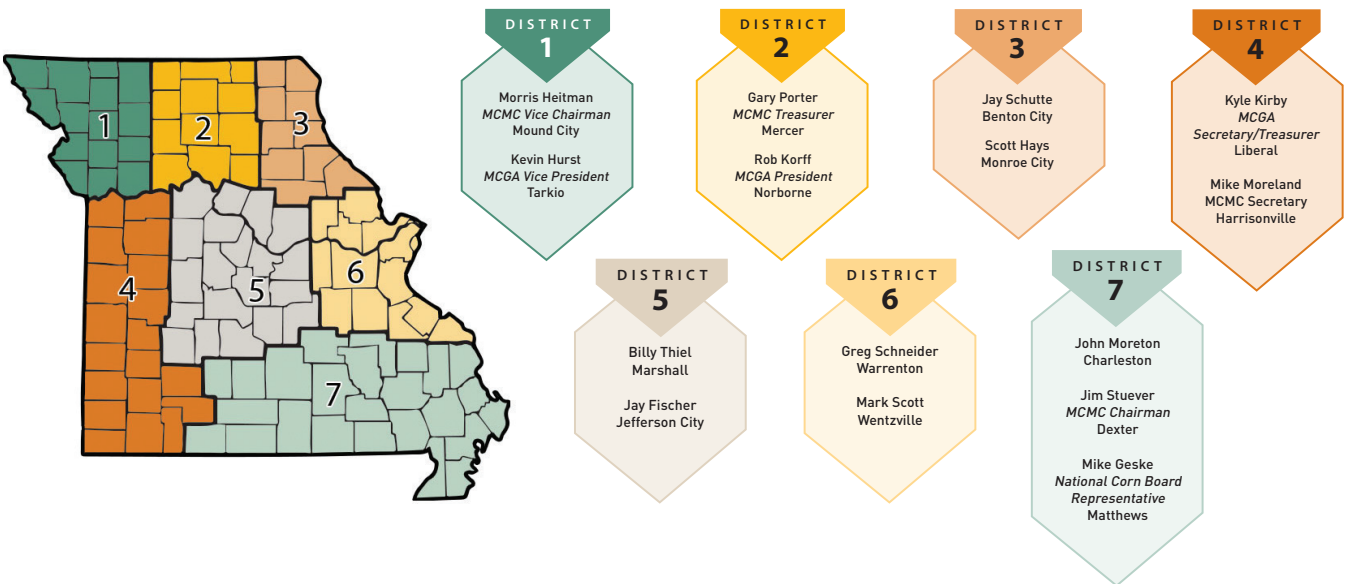
Facebook: www.facebook.com/MissouriCorn 
Twitter: www.twitter.com/MissouriCorn or [@MissouriCorn](http://www.twitter.com/@MissouriCorn) 
YouTube: www.youtube.com/MissouriCorn 
Flickr: www.flickr.com/MissouriCorn 



MISSOURI CORN STAFF

Gary Marshall	Chief Executive Officer
Gary Wheeler	Vice President of Operations and Grower Services
Becky Frankenbach	Director of Communications
Cindy Remmert	Director of Finance
Bradley Schad	Director of Ethanol Policy
Shane Kinne	Director of Public Policy
Hilary Holean	Outreach Coordinator
Matthew Amick	Field Service Representative – Eastern District
Aimee Gutshall	Field Service Representative – Western District
Whitney Lammers	Assistant to the CEO
Lori Schulte	Office Manager

2012-2013 MISSOURI CORN BOARD OF DIRECTORS



LETTER FROM THE CHAIRMAN



Rob Korff
MCMC Chairman

My fellow corn producer,

The history books will describe 2012 as a year plagued by unrelenting heat and extreme lack of rainfall with new contract highs and volatile markets - and they will be correct in their assessment. It was a year when growers across Missouri faced many challenges and in most cases, these challenges were 180 degrees different from those experienced by growers along the Missouri and Mississippi rivers during the record flooding of 2011.

During both of these devastating seasons, the Missouri Corn Merchandising Council (MCMC) made a difference. From a tremendous outreach effort during the flood for government assistance, calls for the Army Corps of Engineers to fix the levees and change the way they operate the river for flood control, to the award-winning video "Underwater

"I want to personally thank you for all you do, from caring for the land that drives this great nation, to the support you give to the corn industry and your community."

and Overlooked" that portrays the stories of suffering and devastation of real lives and families along the river, MCMC was there alongside Missouri's growers. In 2012, we shifted to pushing for drought assistance by reaching out to federal and state agencies and connecting cattlemen and corn growers with a corn stover and alternative forage outreach program for cattle producers searching for feed after scorching temperatures baked fields.

MCMC also went to the mat to defend products you use in your farming operation - products such as atrazine and

biotechnology that anti-agriculture activists want to take away from us. While these critics often choose to ignore it, sound science has proven time and time again these products are safe and needed to keep production costs down and to efficiently produce more corn with less.

Beyond the battles provided by Mother Nature and vocal opponents, MCMC continued the education and promotion of our industry through our partnerships with NASCAR and the St. Louis Cardinals. Through these efforts, we shared your story with consumers, highlighting the great job you do every day on your farm to produce feed, fuel and fiber in the safest, most efficient and environmentally friendly manner.

None of this is possible without you and your commitment to your industry through checkoff dollars. Every checkoff dollar is leveraged with other programs and invested wisely by the elected volunteer board of directors after much research and discussion. These dollars are administered by our hard-working and talented staff who share your passion and understanding of the corn industry. As we move into a new year, I challenge anyone to name one successful industry that does not dedicate resources to educate and promote their product. For the corn industry in Missouri, MCMC on average utilizes less than 1/10 of 1 percent on a per acre basis to promote and defend your industry. What an incredible value the corn checkoff is for your operation.

I want to personally thank you for all you do, from caring for the land that drives this great nation, to the support you give to the corn industry and your community. Because of the vision and work done by people before me, the future of agriculture and corn production looks bright. I am honored to have been given the opportunity to help ensure the future stays that way.

May God bless you,

Rob Korff
MCMC Chairman



A DECADE OF FUELING MISSOURI

GROWING JOBS



67,000

DIRECT AND INDIRECT
JOBS STATEWIDE

In addition to growing a high-quality kernel, cleaner energy and a quality feed ingredient, Missouri corn growers and ethanol producers are manufacturing jobs.

ADD IT ALL TOGETHER



STRONGER COMMUNITIES ♦ MORE JOBS ♦ LESS DEPENDENCE ON FOREIGN OIL

With today's corn and ethanol industries direct and indirect impact on Missouri, it's easy to see why our future is planted in opportunity.

REBUILDING COMMUNITIES

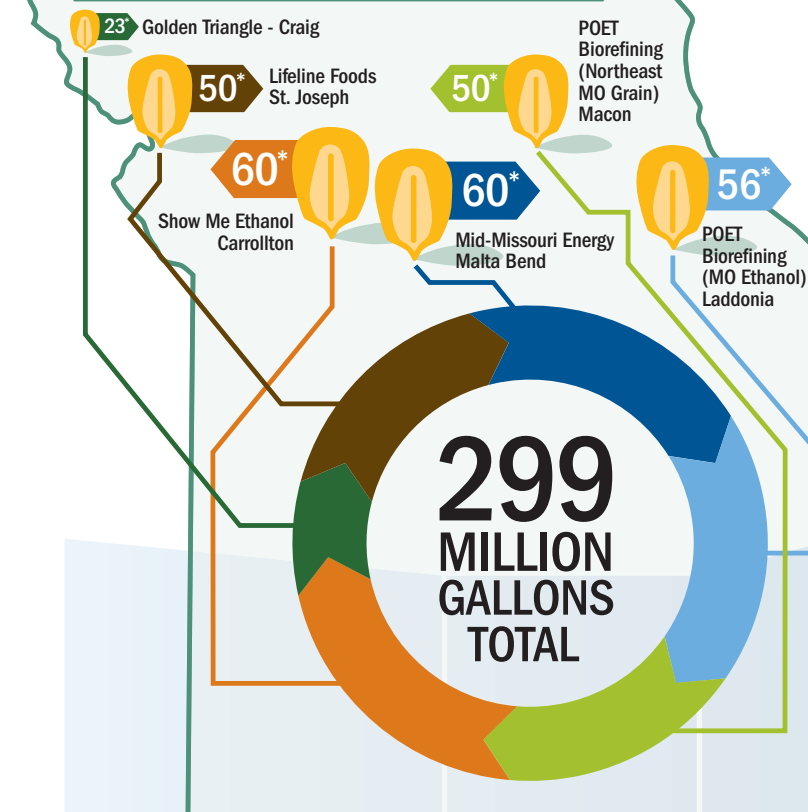


\$12 BILLION IN ECONOMIC VALUE
FROM 2000-2011

Biorefineries also contributed
\$127 million annually in state and local taxes
and **\$222 million** in federal taxes.

©2012, Missouri Corn Growers Association. All Rights Reserved.
www.mocorn.org | www.facebook.com/MissouriCorn | Twitter: @MoCorn

TOTAL ETHANOL PRODUCTION



Thanks to years of hard work and dedication, **Missouri's corn and ethanol** industries now have a **multi-billion-dollar impact** on our state. Corn growers and ethanol producers generated **350 million bushels** of corn and nearly **300 million gallons** of renewable fuel in **2011**. Along with ethanol, **more than 825,000 tons of distillers grains**

is gleaned from the refining process. This is an excellent source of energy and protein for Missouri's livestock and poultry industries.

*IN MILLIONS OF GALLONS

ANNUAL ECONOMIC VALUE OF STATE CORN AND ETHANOL INDUSTRIES

\$1.6 BILLION
\$1.4 BILLION
\$1.2 BILLION
\$1 BILLION
\$800 MILLION
\$600 MILLION
\$400 MILLION
\$200 MILLION

2001

2002

2003

2004

2005

2006

2007

2008

2009

2010

2011

LETTER FROM THE PRESIDENT



Billy Thiel
MCGA President

Dear valued members,

I would like to thank everyone for the opportunity and honor to serve you as president of the Missouri Corn Growers Association (MCGA) in 2012. As the lobbying arm of the Missouri Corn organization, we spend a lot of time at both the state and federal capitols working on behalf of our members and the state's corn farmers.

“ We would like to keep our grassroots strength a priority in our organization and thank you for your continued involvement.”

Like many in the past, 2012 was a challenging, yet rewarding, legislative year for Missouri corn growers. With the help of grower visits in the halls of the State Capitol, we were able to keep Missouri's ethanol incentive fund fully financed. This was not an easy task given the tough budget climate. But by working together, Missouri's legislature and governor have completed a promise made to the hardworking families who built the state's ethanol industry from the ground up. And this investment is paying off in the form of an increased local tax base, good jobs and a homegrown fuel that is reducing our dependence on foreign oil.

MCGA also helped defeat a proposed state farmland tax increase aimed at growers. In December 2011, the Missouri State Tax Commission proposed an 8 percent increase in the assessment values of farmland grades 1-4. This would have been detrimental to farmers, including those devastated by 2011 floodwaters.

In addition, MCGA kept a watchful eye on the action in Washington, D.C. Farmers across the nation worked hard to defend the federal Renewable Fuel Standard and set the record straight on corn and ethanol. MCGA and the National Corn Growers Association (NCGA) were also able to influence positive changes to 2012 crop insurance policies. Growers had a chance to adjust APH yields, as well as experience lower premiums due to an adjustment of loss ratios. This is a huge benefit considering the challenging 2012 growing season.

MCGA also worked to keep the family in farming, opposing regulations that would have severely limited our kids from many jobs on the family or neighboring operations. And despite Congress stalling out on a new farm bill, focusing instead on elections, MCGA pushed for a 2012 passage and continues to work toward a completed bill.

We've had a successful year promoting corn and educating the public about corn issues to ensure continued viability of our farms. MCGA works hard to grow grassroots involvement and strengthen our voice – not only in the halls of the capitols, but also close to home where education is becoming more important each year.

I believe farmers are seeing the value in belonging to MCGA. Last year we set a new membership record, garnering the largest numeric and percentage increases among NCGA affiliated states. We would like to keep our grassroots strength a priority in our organization and thank you for your continued involvement. Our members make a difference in lobbying efforts at the capitol and in the successes we can all share.

Thanks again for a memorable year,

Billy Thiel
MCGA President



CORN VICTORIES MOVE FORWARD ON CAPITOL HILL

- Changing crop insurance to provide stronger safety net
- Fighting for balanced river funding
- Exempting farmers from transportation regulators
- Working to get onerous farm labor regulations withdrawn

No matter what hurdles come out of Washington, D.C., the Missouri Corn Growers Association (MCGA) is working to defend your right to farm.

Crop Insurance Adjustments Shift in the Right Direction

MCGA and NCGA were instrumental in making positive changes to 2012 crop insurance policies. Growers had a chance to adjust APH yields as well as experience lower premiums due to an adjustment of loss ratios. In a tough weather year such as 2012, this was a blessing to growers, providing a solid safety net and keeping money in pocketbooks.

River Funding Rushes to the Forefront

Following the disastrous 2011 Missouri River flood, Missouri's congressional delegation waged a heartfelt battle with entrenched environmental groups to ensure flood control funding was made a priority. Sen. Roy Blunt offered an amendment to the Fiscal Year 2013 Energy and Water Appropriations Bill that would have moved \$40 million from the Missouri River Recovery Program (MRRP) to flood control projects. The initial proposed budget allotted \$90 million to the MRRP while only providing approximately \$7.7 million for flood control. Though the amendment failed by one vote, MCGA applauds Sen. Blunt for continuing to battle for a balance in Missouri River funding.

Congressman Blaine Luetkemeyer (left) discusses corn and ethanol issues with Missouri Corn CEO Gary Marshall and board member Kevin Hurst of Tarkio, Mo., during a visit to the Missouri Corn booth at the Missouri State Fair.

Congressman Blaine Luetkemeyer was victorious in passing two important amendments to eliminate expensive, redundant, long-term studies of the Missouri River. These studies were created to research potential habitat loss along the river but have yet to produce any real results. In a time when every dollar counts, this common-sense cut should be applauded.

Tackling Transportation Issues

A comprehensive transportation bill passed both federal chambers with key amendments for farmers. One amendment, co-sponsored by Sens. Claire McCaskill and Roy Blunt, allows farmers to cross state lines within 150 miles of their farms without triggering interstate commerce laws. A second amendment co-sponsored by Sen. McCaskill expanded farmer exemptions from hours-of-service regulations. These amendments help reduce restrictions for farmers and allow for easier transportation of commodities.

Keeping the Family in Farming

In May, the U.S. Department of Labor (DOL) officially withdrew proposed rules that would have severely impacted farm families and rural America. These proposed rules would have put strict limits on the type and nature of work a child under the age of 16 could perform on a farm. When the DOL announced these proposed rules in September 2011, MCGA submitted written comments and went to work with Missouri's congressional delegation to fight back. MCGA members also joined in the fight, contacting their representatives in Congress. This victory serves as yet another reminder of the good things we can accomplish when working together.

CORN VICTORIES AT THE STATE CAPITOL

- Final year of Missouri farmer-owned ethanol incentive funding secured
- Missouri farmland tax increase defeated
- Fighting back against out-of-state activist groups

The 2012 Missouri legislative session came to a close May 18, marking numerous successes for corn growers.

A Promise Fulfilled

The General Assembly passed the Missouri Department of Agriculture budget that included full funding for the final year of the Missouri Qualified Fuel Ethanol Producer Incentive Fund. This action fulfills the state's promise to the hardworking farm families who were willing to take on the risk of building six farmer-owned ethanol plants. MCGA appreciates the state legislature for recognizing the benefits of a Missouri-made fuel and standing up for corn growers despite tough budgets.

Defeat of Farmland Tax Increase

In December 2011, the Missouri State Tax Commission proposed an 8 percent increase in the assessment values of farmland grades 1 through 4. In flooded counties along the Missouri and Mississippi rivers, nearly 80 percent of land falls under this category. Recognizing the implications, MCGA immediately



Missouri corn farmers visited the State Capitol to talk with legislators about the importance of corn production to the state's economy during the Missouri Corn Growers Association (MCGA) annual meeting and lobby day. Pictured (l-r): Kyle Kirby, Missouri Corn board member from Liberal, Mo.; MCGA President Billy Thiel of Malta Bend, Mo.; Representative Caleb Jones (R-California, Mo.); and Rob Korff, Missouri Corn board member from Norborne, Mo.

went to work. Thanks to the leadership of Sen. Brian Munzlinger (R-Williamstown), Rep. Casey Guernsey (R-Bethany), and the efforts of MCGA members, the General Assembly successfully rejected this ill-timed tax increase on farmers.

Omnibus Agriculture Bill, Senate Bill 631

The omnibus agriculture bill passed the last day of session and contained a key provision to protect farmers from out-of-state activist groups such as the Humane Society of the United States (HSUS). Under SB 631, the *Duty to Report Animal Abuse* provision requires farm employees who videotape acts of suspected animal abuse to turn that video, unedited, into local law enforcement within 24 hours of recording. This act ensures true cases of animal abuse are addressed appropriately while keeping animal activists from falsely portraying agriculture through altered videos.



Moving forward, MCGA continues to be your voice on important policy issues. By joining together, we have accomplished more than we could individually — and more than we ever thought possible back in 1978.

SHARING OUR STORY

- Cardinals campaign continues to score with millions of consumers
- Missouri Corn flood video wins prestigious Telly Award
- Education program reaches teachers and students in 27 states

Missouri Farmers Hit a Homerun

The end of this year’s baseball season also closed out the third year of a successful education campaign with the World Series Champion St. Louis Cardinals. Thanks to a unique partnership between the Cardinals and members of Missouri Farmers Care (MFC), *Safe at the Plate* was created to increase awareness and understanding of today’s food production with millions of consumers across Cardinal Nation.

With design help from the National Pork Board, this year’s campaign included baseball cards, recipe cards, print ads and display banners in Busch Stadium. Radio ads featuring Missouri farm families were aired at least twice during each of the Cardinals’ regular season games on more than 117 stations across Missouri and bordering states. These ads reached approximately 3.3 million unique urban and rural listeners repeatedly over a six-month period.



St. Louis Cardinals mascot Fredbird fishes with Missouri Corn board member Kyle Kirby by a corn field at Kirby Farms near Liberal, Mo., during a video shoot for the Missouri Farmers Care 2012 *Safe at the Plate* education campaign.

A big draw with fans was the wildly popular Cardinals’ mascot, Fredbird. Humorous and educational corn, soybean, dairy, pork and beef videos with Fredbird were aired in Busch Stadium and are now available online at www.youtube.com/MissouriCorn. Posted in conjunction with the video, static billboards supported the campaign’s main messages, effectively raising the visibility of Missouri farmers to 40,000+ consumers and fans in Busch Stadium.

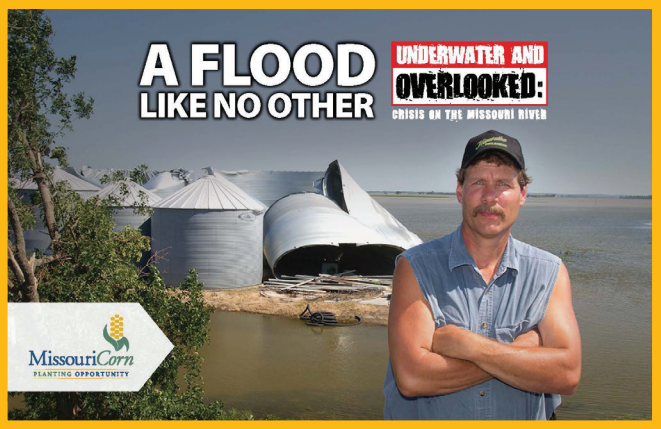
Several components also brought a personal touch to the stadium. At select Friday night home games, the *Safe at the Plate* display was set up in Ford Plaza so farmers could talk directly with fans and give pre-game interviews. At these games, winners of AgriMissouri

gift baskets, donated by the Missouri Department of Agriculture, were presented their prize live on the jumbotron by a Missouri farmer. The coalition also invited dietitians, restaurateurs, food reporters, food bloggers and other key influencers to Busch Stadium to talk directly with farmers and learn more about Missouri agriculture.

Just like the Cardinals, it takes a strong team to execute this campaign. In addition to Missouri Corn, campaign partners included: Midwest Dairy Association, FCS Financial, MFA Incorporated, Missouri Pork Producers, Missouri Soybean Association, MFA Oil, Missouri Beef Industry Council, Missouri Farm Bureau and the St. Louis Agribusiness Club. To learn more, visit www.MissouriFarmersCare.com.

Flood Video Continues to Get Attention

The Missouri Corn Merchandising Council (MCMC) and Missouri Corn Growers Association (MCGA) were named Bronze winners in the 33rd Annual Telly Awards for the short documentary, *Underwater and Overlooked: Crisis on the Missouri River*. The 15-minute film detailing the



personal losses caused by the 2011 Missouri River flood was recognized in both the online video–documentary and online video–social responsibility categories.

Founded in 1979, the Telly Awards honor outstanding commercials, video and film productions, and web commercials, videos and films. Winners represent the best work of respected advertising agencies, production companies, television stations, cable operators, and corporate video departments in the world. This year, nearly 11,000 entries were received from all 50 states and numerous countries.



MCMC and MCGA won two bronze Telly Awards for the 15-minute 2011 flood crisis documentary.

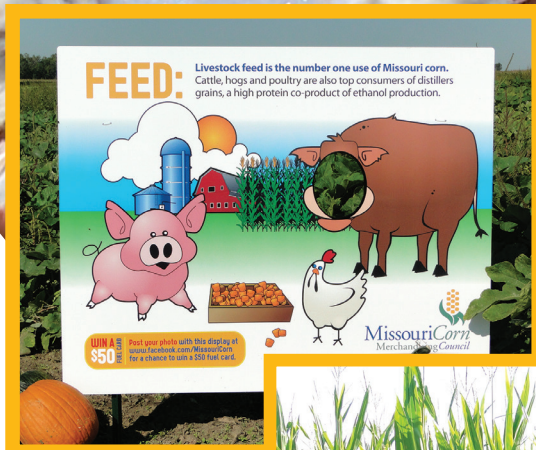
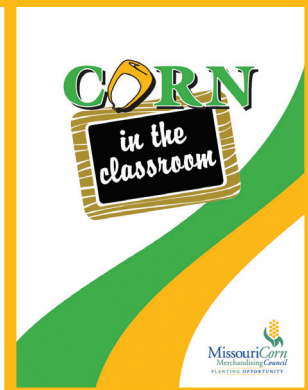
SHARING OUR STORY

Growing Kernels of Knowledge

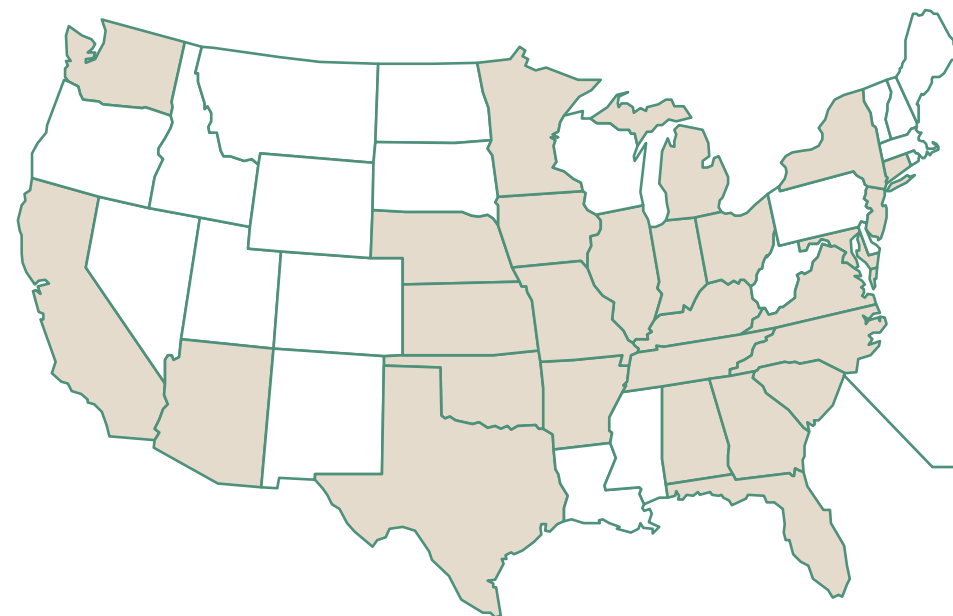
Working to bridge the gap between the farm and grocery store, Missouri Corn continued outreach efforts to help students across the state reconnect with the source of their food, fiber and fuel. To kick off another school year, more than 3,000 public and parochial school third grade teachers received a postcard inviting them to visit www.mocorn.org and bring corn education in their classroom to celebrate harvest.

Providing teachers with free, no-hassle help, *Corn in the Classroom* materials included lesson plans, hands-on activities, posters, activity books and other teaching tools designed to meet third grade level requirements for Missouri students. To date, Missouri Corn's education program has reached thousands of students, with nearly 14,000 activity books being distributed to classrooms in 27 states.

Nearly 14,000 Corn in the Classroom activity books have been distributed nationally in 27 states.

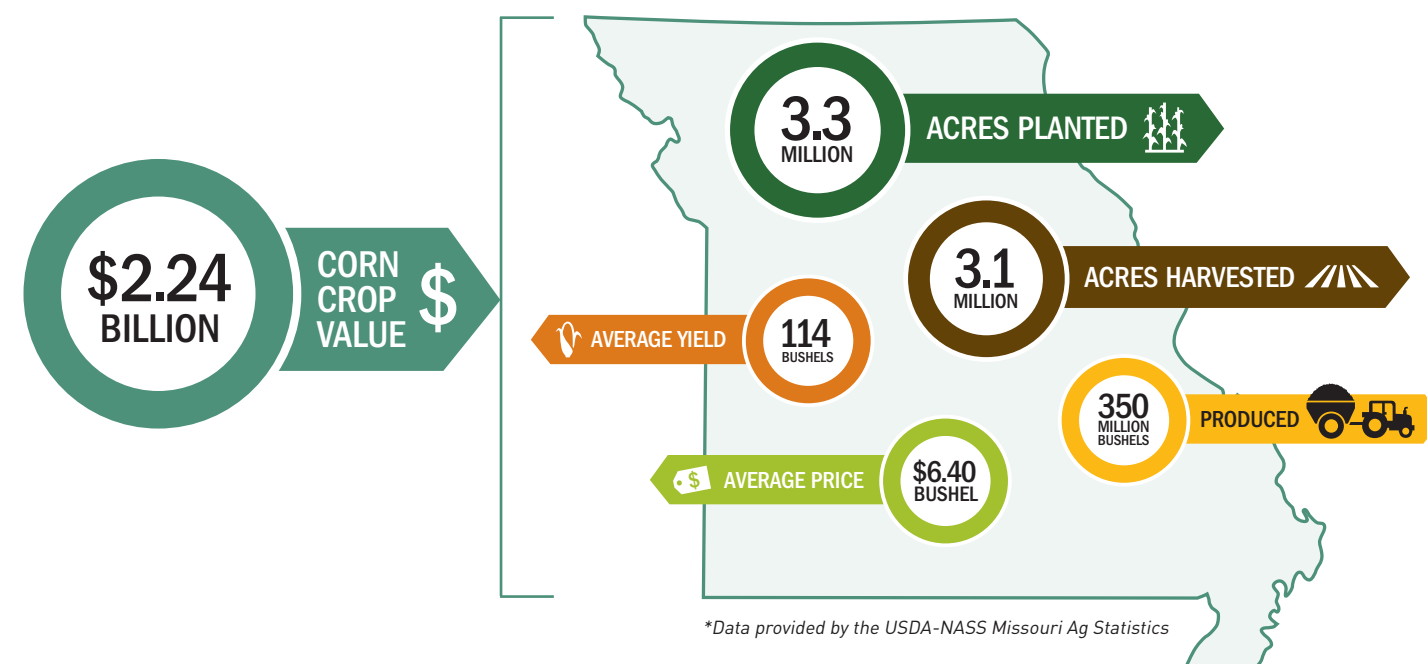


CORN IN THE CLASSROOM ACROSS THE COUNTRY



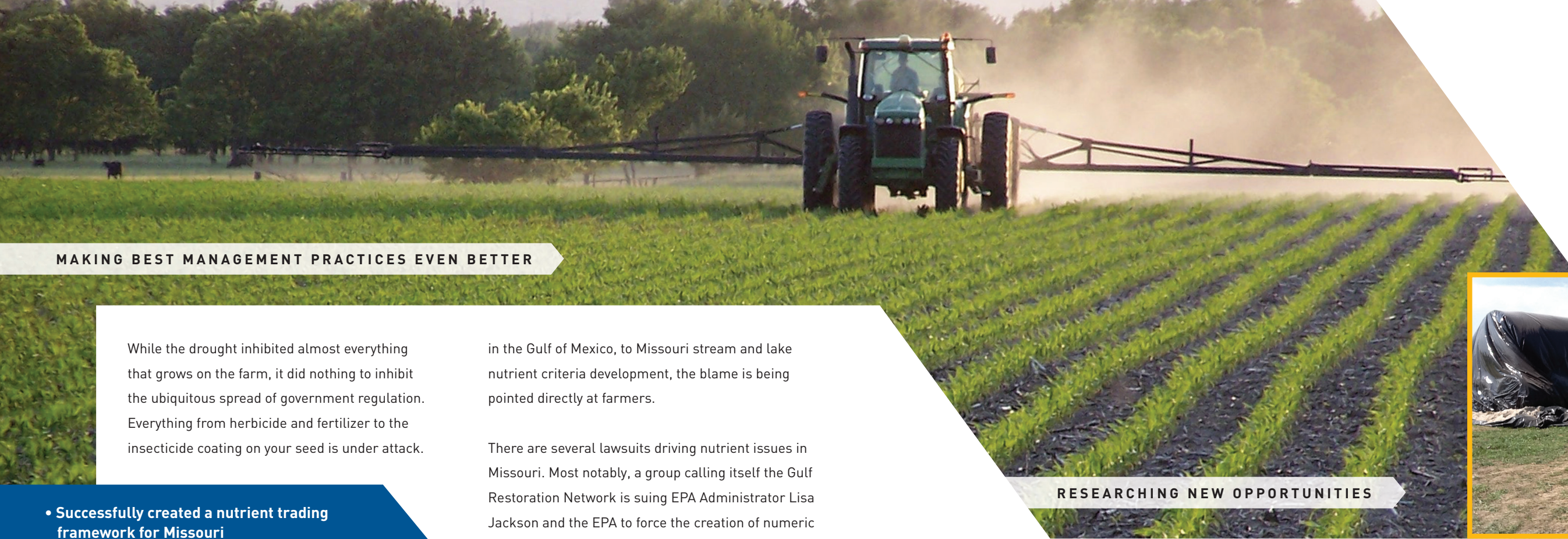
ALABAMA	MINNESOTA
ARIZONA	MISSOURI
ARKANSAS	NEBRASKA
CALIFORNIA	NEW JERSEY
CONNECTICUT	NEW YORK
FLORIDA	NORTH CAROLINA
GEORGIA	OHIO
ILLINOIS	OKLAHOMA
INDIANA	SOUTH CAROLINA
IOWA	TENNESSEE
KANSAS	TEXAS
KENTUCKY	VIRGINIA
MARYLAND	WASHINGTON
MICHIGAN	

2011 MISSOURI CORN STATS



Moving beyond the walls of the classroom, Missouri Corn again teamed up with corn mazes throughout Missouri to provide corn education. The partnership with popular agri-tourism venues helped visitors learn about corn while experiencing it firsthand as families and students navigated the fields. In its third season, the program utilized kid-friendly, interactive displays to highlight corn's top users: feed, fuel and exports.

Parents, teachers and industry partners interested in utilizing *Corn in the Classroom* materials can download all educational tools online under the resources tab at www.mocorn.org.



MAKING BEST MANAGEMENT PRACTICES EVEN BETTER

While the drought inhibited almost everything that grows on the farm, it did nothing to inhibit the ubiquitous spread of government regulation. Everything from herbicide and fertilizer to the insecticide coating on your seed is under attack.

- **Successfully created a nutrient trading framework for Missouri**
- **Continued to defend farmers’ ability to use atrazine**
- **Lobbied for fair stream classification and forestalled onerous lake nutrient criteria**

MCGA and the Environmental Resources Coalition (ERC) led the charge to advocate on your behalf, including:

- submitting comments to the U.S. Department of Agriculture (USDA) on the safety of neonicitides (a class of insecticides) used in seed treatments
- supporting the benefits of Monsanto and Dow Agro Science new seed traits offering corn and soybean tolerance to dicamba and 2-4,D
- testifying before the EPA scientific advisory panel in Washington, D.C., in support of atrazine

However, the largest water quality issue facing agriculture today is nutrients. From the hypoxic zone

in the Gulf of Mexico, to Missouri stream and lake nutrient criteria development, the blame is being pointed directly at farmers.

There are several lawsuits driving nutrient issues in Missouri. Most notably, a group calling itself the Gulf Restoration Network is suing EPA Administrator Lisa Jackson and the EPA to force the creation of numeric nutrient criteria for all rivers and streams flowing into the Gulf of Mexico. If successful, the lawsuit would impose a Total Maximum Daily Load (TMDL) or nutrient diet on all Midwestern states that drain into the Gulf. This would be disastrous for agriculture, since an estimated 45 to 60 percent reduction in nitrogen would be required. MCGA, along with many other state and national corn and agriculture groups, has intervened in the lawsuit to give farmers a voice in the outcome.

With science at our side, rest assured MCGA and ERC are moving forward in our defense of your rights on environmental issues. The topics we are tackling have the potential to impede your daily operations, farm profitability and long-term sustainability perhaps more than any other issue.



RESEARCHING NEW OPPORTUNITIES

- **Completion of the Missouri Biomass Pellet & Densification for Bioenergy Project**
- **Statewide feed demonstrations help livestock producers**

Cornstover for Missouri’s Green Energy Markets

As part of our mission, MCMC continues to explore new markets for growers. Over the past several years, Missouri Corn has researched the use of corn stover as well as other field crop residues. In 2011-2012, MCMC and USDA partnered to research the feasibility of today’s technologies for large scale densification of biomass into pellets, cubes, pucks, briquettes and bricks to serve existing or new power plants. These biomass products have tremendous potential to be a sustainable energy source for Missouri’s future.

Helping Our Livestock Neighbors

As the drought of 2012 began to decimate forage inventory for cattlemen, MCGA and its partners moved



forward to assist fellow farmers. MCGA partnered with the Missouri Cattlemen’s Association (MCA) and the University of Missouri to connect individuals looking to buy or sell forages online.

The groups also hosted seven demonstrations to discuss two techniques for improving low-quality forages: ammoniation and calcium hydroxide treatments. Ammoniation is a process that treats a large pile of covered corn stover or other low-quality forage with anhydrous ammonia. This process boosts digestibility 15 percent and doubles crude protein of the forage. Another treatment method mixes corn stover with calcium hydroxide, which also increases digestibility. These two processes helped to provide additional forage options for cattlemen and new market opportunities for corn growers hurt by the drought.

Thanks to Justin Sexten, MU Extension and Commercial Ag Program, MCA, MFA Incorporated, Mississippi Lime, Boehringer Ingelheim Vetmedica and the hosts of the events for making these demonstrations a success!



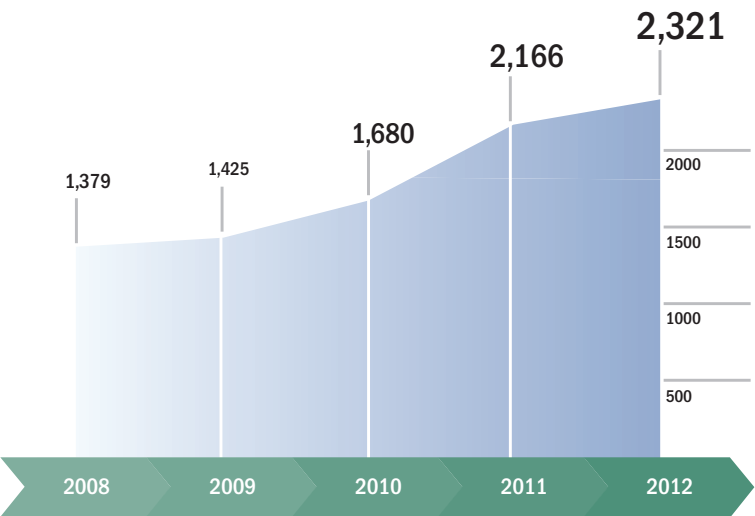
YOUR MEMBERSHIP MATTERS

- MCGA hits historic growth in membership
- Award-winning membership program recognized
- Launch of new field services program helps build grassroots support

Membership Continues to Climb

In 2011, MCGA finished with the highest numeric growth and highest percentage growth of any of the 26 National Corn Growers Association-affiliated states. This momentum continued into 2012, shattering Missouri Corn's historical membership record. The organization is nearing 2,400 strong and still growing.

MCGA MEMBERSHIP YEARLY INCREASE



Missouri Corn Efforts Honored

MCGA was recognized by the Missouri Society of Association Executives (MSAE) with an Award of Excellence in Membership Development during the organization's annual meeting in Jefferson City. MCGA was honored for a membership program that grew its grassroots base by 641 members in only 21 months – a 38 percent increase. This growth was a result of directly connecting with growers and industry partners out in the field on a more frequent basis. And this recognition would not have been possible without your involvement.

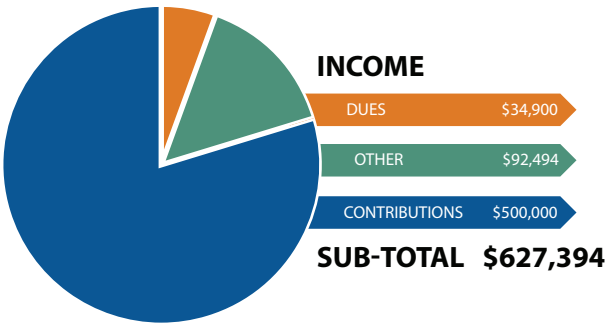
Getting out in the Field

Missouri Corn believes an effective way to communicate with growers and industry partners is through direct, face-to-face conversations. With an expanded field services program comprised of two full-time and two part-time representatives, Missouri Corn is garnering grassroots support for policy initiatives and keeping growers tuned in to the latest industry developments. Timely communication and effective programs are leading to more engaged members, stronger policy positions and increased market development opportunities.

The year ahead will prove challenging with continued attacks on the corn and ethanol industries. Every membership matters. Battles will ensue, and MCGA must counter these attacks with a strong, engaged grassroots base. If you are already a member, thank you for your support. If you are not a member, please join the fight to protect the corn industry in the state, country and worldwide. Visit www.mocorn.org to become a partner in progress.

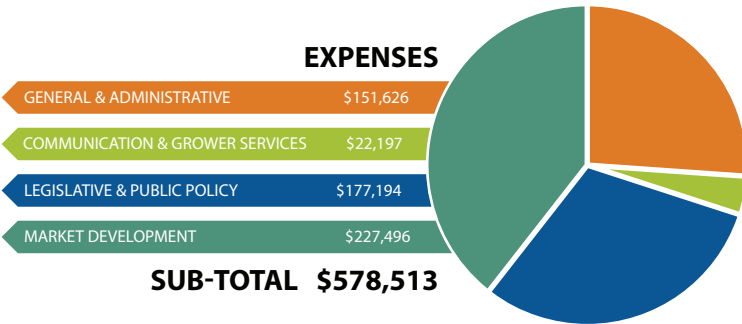


2012 MISSOURI CORN GROWERS ASSOCIATION FINANCIALS



OVERVIEW

BEGINNING BALANCE.....	\$582,880
TOTAL INCOME.....	\$627,394
TOTAL EXPENSES.....	\$578,513
ENDING BALANCE.....	\$631,761

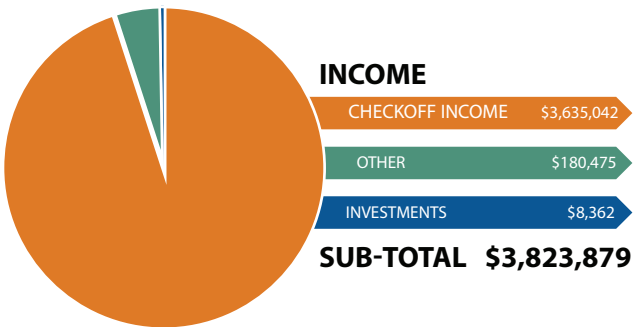


2012 MISSOURI CORN MERCHANDISING COUNCIL FINANCIALS



OVERVIEW

BEGINNING BALANCE.....	\$3,955,597
TOTAL INCOME.....	\$3,823,879
TOTAL EXPENSES.....	\$3,455,696
ENDING BALANCE.....	\$4,323,780



EXPENSES

GENERAL & ADMINISTRATIVE	\$145,132
COMMUNICATION & GROWER SERVICES	\$636,805
PRODUCTION STEWARDSHIP	\$381,456
VALUE ENHANCEMENT	\$360,537
MARKET DEVELOPMENT	\$1,931,766
SUB-TOTAL	\$3,455,696

- EPA issues final approval of E15
- Continued ethanol infrastructure expansion
- NASCAR: 3 million miles on ethanol and going strong

MISSOURI ETHANOL: FUELING WITH PRIDE



NASCAR Racing Ethanol Forward

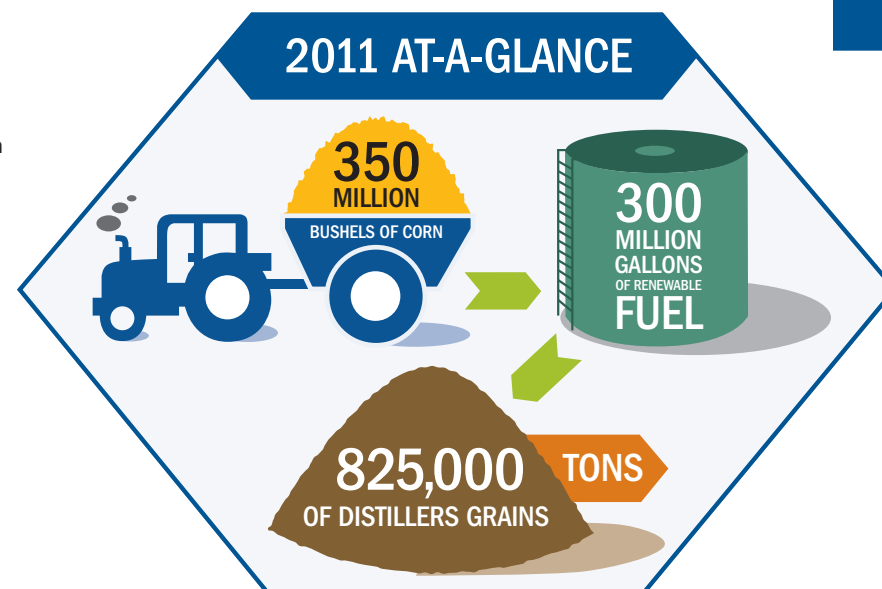
NASCAR raced through its 3 millionth mile running on E15, providing drivers with more horsepower while keeping cars running cleaner and burning cooler. Close to home, American Ethanol was highlighted at the Kansas Speedway with a green-painted backstretch and American Ethanol banner. As E15 continues to successfully power NASCAR, it's clear if it works in racecars, it should definitely work in your vehicle too!



At the end of August, Missouri's six majority farmer-owned ethanol plants continued to run at or near capacity, producing more than 290 million gallons and generating more than 825,000 tons of high protein distillers grains for the state's livestock industry. To help maintain this vital market for the state's corn crop, Missouri Corn continues to advance ethanol development and education.

New Ethanol Blending Infrastructure Takes Hold

This year E15 received final EPA approval for use in 2001 and newer vehicles. To ensure a smooth transition to higher blends of ethanol, Missouri Corn continues work to expand infrastructure with fuel retailers. Missouri Corn, in conjunction with retail outlets, helped secure additional USDA funding to provide six more Flex-Fuel pumps across the Show-Me State. With blender pumps installed in 16 locations statewide and 115 E85 (85 percent ethanol, 15 percent gasoline) stations, consumers can now choose a cleaner, homegrown, renewable source for their fueling needs.



Setting The Record Straight

Missouri Corn's Ethanol Truth Campaign continued to dispel the myths surrounding the use of ethanol. Talking directly with consumers and mechanics at boat, small engine and consumer shows around the state, this interaction allows us to set the record straight, addressing common misconceptions about ethanol and arming others with the truth behind today's renewable fuel.



Furthering our reach to classic car enthusiasts, Missouri Corn converted a 1973 Chevrolet Corvette to run on E85 and took it on the road to car shows to prove ethanol is safe for vehicles. The eye-catching car was at a show almost every weekend during the summer of 2012 including the Street Machine Nationals in Springfield, Mo. This massive event, held the last week of September, featured more than a thousand cars and drew tens of thousands of attendees.

MISSOURI BLENDER PUMP LOCATIONS

FASTLANE PHILLIPS 66 240 COLLEGE CAMPUS DRIVE MOSCOW MILLS, MO	CONVENIENCE FOOD MART CONOCO 701 EASTLAND DRIVE JEFFERSON CITY, MO
FASTLANE PHILLIPS 66 6725 HIGHWAY 6 TAYLOR, MO	CONVENIENCE FOOD MART CONOCO 3714 WEST TRUMAN BOULEVARD JEFFERSON CITY, MO
CROSSROADS CONOCO/ PHILLIPS 1001 U.S. 61 BUSINESS BOWLING GREEN, MO	EXPRESS STOP CONOCO 101 DISCOVERY DRIVE WAYNESVILLE, MO
SERVICE AND SUPPLY COOP 1196 STATE HIGHWAY E BELLFLOWER, MO	TEMPSTOP CONOCO/PHILLIPS 4575 S. LIMIT AVENUE SEDALIA, MO
MISSISSIPPI MOONSHINE, LLC SOUTH HIGHWAY 79 CLARKSVILLE, MO	TEMPSTOP CONOCO/PHILLIPS 100 SOUTHEAST TODD GEORGE PARKWAY LEE'S SUMMIT, MO
BREAK TIME 900 CONLEY ROAD COLUMBIA, MO	PLATTE CLAY FUELS 1000 W. HIGHWAY 92 KEARNEY, MO
BREAK TIME 402 N. WOODBINE ROAD ST. JOSEPH, MO	PLATTE CLAY FUELS 1500 HIGHWAY 92 PLATTE CITY, MO
BREAK TIME 1000 W. COLLEGE STREET MARSHALL, MO	HOMETOWN FUEL HIGHWAY 65/MAIN STREET MERCER, MO

American Ethanol was highlighted at the Kansas Speedway with banners in highly visible locations.

STAYING INFORMED

Missouri corn growers receive news on federal and state activities, market development programs, educational opportunities and much more in the following ways:

StalkTalk Newsletter

Published bi-weekly for MCGA members, *StalkTalk* provides the news growers need. To become a member and be added to the email list, visit www.mocorn.org or call (800) 827-4181.

CornTalk Radio Programs

CornTalk radio programs are aired weekly on the following farm radio affiliates: KAAK-Bethany, KFEQ-St. Joseph, KMZU-Carrollton, KRES-Moberly, KTRS-St. Louis and WTAD-Quincy.


Missouri Corn Online

Missouri Corn Online provides in-depth information from Missouri Corn, markets and weather by DTN, a legislative action center and much more at www.mocorn.org.

Social Media

Missouri Corn is using social media tools to help reach the diverse online audience. Join the conversation:

 Facebook: www.facebook.com/MissouriCorn

 Twitter: www.twitter.com/MissouriCorn or @MissouriCorn

 YouTube: www.youtube.com/MissouriCorn

 Flickr: www.flickr.com/MissouriCorn

CONTACT US:

3118 Emerald Lane
Jefferson City, MO 65109
Phone: (573) 893-4181
Toll-free: (800) 827-4181
Fax: (573) 893-4612
E-mail: mcga@mocorn.org
Web: www.mocorn.org